

25th March 2026

Newsletter



Dear Parents and Carers,

As the spring sun begins to warm our days and the promise of Easter fills the air, I'm delighted to share our final newsletter before the holidays.

This term has been a whirlwind of exciting activities, from Design & Technology days, trips out, sporting achievements, World Book Day to the Lenten preparations underway for the upcoming Easter celebrations.

As we come to the end of another term it is important to reflect upon the hard work and effort that has taken place this academic year. I would like to thank all our children, staff and parents for your continued support in making St John Fisher CVA the wonderful school it is! On behalf of all the Staff and Governors, we wish all our parents and children a happy and holy Easter.

God bless,

Mr Gallagher

DATES FOR THE DIARY

April

- 13th Back to School
Boys Football - Semi Finals
- 14th Girls Football - Semi Finals
- 15th Year 1 & 2 Lunch Time Football/Sports Club - 6 weeks
- 17th Netball Competition - Selected Year 5 & 6
Year 4 & 5 Swimming Starts
Tennis Club Starts - see Dojo message
- 21st Parallel Athletics - Selected Year 3 & 4
- 29th Year 3 & 4 - Tennis Development Event - Selected children

May

- 4th Bank Holiday - School Closed**
- 7th Year 3 Sports Festival at St Pauls
- 11th to 14th - Year 6 SAT's - Free Breakfast Club available to all Year 6 students during SAT's
- 16th PTFA Spring Fayre - all Welcome!
- 18th Walk to School Week - more information to follow.
- 19th May Assembly - 9a.m - Led by Year 1- All Welcome
Year 4 Sports Festival at St Pauls
- 20th Lesson 10 of Branch 5 - 9a.m. - Led by Year 3 - Parents Welcome
23rd to 31st - Half Term

June

- 1st Back to School
- 3rd Lesson 10 of Branch 5 -9a.m - Led by Year 5
Year 1 & 2 Lunch Time Football/Sports Club start - 6 sessions
- 4th Lesson 10 of Branch 5 - 9a.m - Led by Year 2
- 5th Year 3 Swimming Starts
- 9th Year 5 Sports Festival at St Pauls
- 11th Year 6 Sports Festival at St Pauls
Year 1 Trip - Beaumanor Hall
- 15th Year 6 CRICH Trip - 15th to 17th
- 16th Armadramarama Club Performance
- 22nd Year 5 Bikeability Starts

July

- 3rd Sports Day - KS1 - a.m & KS2 - p.m. Specific times to follow.
- 10th End of Academic Year - School finishes at 2p.m. After school club is available until 4.15p.m**

CATHOLIC LIFE

LENT AT ST JOHN FISHER

Lent

Chaplaincy Team

During Lent, the chaplaincy team have been opening our prayer area daily for children to write down their Lenten promise. They can also use our prayer area to come and say any personal prayers they have during lunchtimes in Lent and place their prayer on our prayer tree.

The Big Lent Walk – CAFOD – 27th March

At the beginning of Lent, we signed up for The Big Lent walk and each child had to walk 1 kilometre. On Friday, we finish the Lenten season here at school with our Big Lent Walk and book/toy sale. Whilst we walked, we thought of those less fortunate.

Thank you to all the children and their families who have contributed to our CAFOD fundraising activities during Lent. We thank you in advance for the generosity pupils and families.

All of the money from these fundraising activities will go to support the work of CAFOD, the Catholic international charity that supports people living in poverty. We will announce the

Reception Liturgy

Well done, Reception class! Your liturgy about Mothering Sunday was fantastic! You were all little stars!

Stations of the Cross

This past week, our hearts were touched by the beautiful service led by our Year 6 students during the Stations of the Cross. Their thoughtful reflections and prayerful delivery brought the Stations to life for the entire congregation.

The students clearly demonstrated a deep understanding of Christ's sacrifice. Their age-appropriate words resonated with everyone present, reminding us of the profound love and suffering Jesus endured for our sake.

We are incredibly proud of the Year 6 class for their dedication and commitment to leading such a meaningful liturgy. Their participation not only enriched the Stations of the Cross but also served as an inspiration for all ages.





When is my child's PE day?

PE days this half term:

Reception: Monday & Wednesday

Year 1: Monday & Thursday

Year 2: Tuesday & Thursday

Year 3: Monday & Thursday

Year 4: Tuesday & Fri (Swimming)

Year 5: Wednesday & Fri (Swimming)

Year 6: Thursday & Friday



CROSS COUNTRY

Huge congratulations to Ava and Clara for their brilliant performance at the National Cross Country Championships! We would like to give a special mention to Ava, who placed 4th in the country for her age group. What an amazing result—well done to both of our star athletes!



Swimming

Swimming will commence on 17th April for Year 4 & 5.



Other points...



Pupil Achievement

Well done to all the pupils who completed their Lenten (Spring) assessments over the last two weeks. Papers for Year 1 through Year 6 will be sent home before the Easter break, now that marking is complete and pupils have had the chance to review their answers in class.

Achievement is a core strength here at St John Fisher, and we are dedicated to ensuring every child succeeds and progresses, regardless of their starting point. Our next assessment period will take place in June; these results will be included in the pupils' end-of-year reports.

Finally, I would like to extend a huge thank you to our hardworking teachers and support staff. Their dedication to teaching, learning, and guiding the children through these assessments ensures that every student can perform to the best of their ability.

Easter Egg Donations

Thank you to the PTFA for their Easter Egg donations for all our children.

The children are very excited for their Easter Egg hunt on Wednesday this week. They will be keeping their eyes peeled for a special visitor who is normally seen hopping about this time of year!



FOUNDATION GOVERNORS

We are looking for practising Catholics who want to support Catholic education by becoming Foundation Governors at St John Fisher.

This does not have to be a parent at the school - someone who has links with the school, a grandparent, a retiree or someone you think may be interested. Let them know!

You can contact our Chair of Governors, Mrs. Helen Ladkin, for more details/information about this vital role - helen.ladkin@stjohnfisher-wigston.leics.sch.uk

You can also visit the [Nottingham diocese](#) for more information and application forms – thank you.





PTFA upcoming meetings

Wednesday 15th April

face to face meeting straight after school 3:20pm
onwards KS1 playground.
(kids allowed to play in playground under parental watch)

Wednesday 15th April

online meeting 8pm
link will be sent out via class WhatsApp groups
or email sjf.ptfa@gmail.com where we will be happy
to send you the link direct.
Everyone Welcome!

Our beautiful art in the library is looking glorious!

The PTFA community have donated to this art work & we hope all the children enjoy this for many years to come.



! SAVE THE DATE !

**We have wonderful news!
Our next Big Event is in the planning!**

Our Spring Fayre Is Scheduled for

**SATURDAY 16th May 2026
11am - 2pm**

The PTFA team are busy bees 🐝 organising this fantastic event and we can't wait to share more with you!

Donations for our Spring Fayre will be requested week by week to help encourage as many donations as possible!
Remember donations make such a difference.

This year we will be requesting:

- w/c 13th April - Teddy Bears & Unopened Toys 🧸
- w/c 20th April - Chocolate 🍫
- w/c 27th April - Jars & Bottles 🍯
- w/c 4th May - pre packaged Cakes 🍰
- w/c 11th May - Plants 🌱

More specific information for each to follow.
Perhaps a Teddy Bear clear out could be on the "To Do" list for Easter!

Business Owner?

Any businesses who would like an advert in our Spring Fayre brochure please contact us via email on sjf.ptfa@gmail.com or catch Valentina on the school run.

Advert prices are starting from as little as £20.00 & will reach throughout the SJF community & beyond.

Anyone you know who runs their own business or can tap up their boss please tell them to get in touch! We are looking for a complete variation in businesses & can't wait to shout out about local ventures in Leicestershire!

All brochure profits to PTFA fundraising.

Mrs Lam needs us! 🌱
Please drop into the office any unwanted plant pots, maybe you have garden mad neighbours sitting with a collection in their garden! Ask them if SJF can have them!

Easter Eggs

This year, instead of bringing in an egg, in order to maintain this fun event for the children, we are asking for a minimum £1 donation per child to cover the cost of the eggs the PTFA have sourced.

Donations can be made on Arbor now or by bringing your coins & the correct amount into the office.

Thank you to those who have made the donation already!


SH.W
Control

Starting This Saturday

CHANGING LIFESTYLE CLUB

Ages 7-10

FREE 12-Week Programme

 **African Caribbean Centre**
Maidstone Rd, Leicester, LE2 0UA

 **Saturday 14th March**

 **11am - 1pm**



Limited places available - Book Now!

- ✓ Ideal for children who would benefit from more physical activity
- ✓ Building healthy routines
- ✓ Growing confidence in a supportive group

Scan the QR code or message to secure a place

Hazel Shaw Tel: 07951627334

Email: hazel@shawcontrol.com

Website: www.shawcontrol.com



16 March 2026

Dear Colleague

Home to School transport for children with special educational needs and disabilities (SEND)

I'm writing to let you know about how parents can apply for SEN transport for the 2026/27 school year, including who needs to apply and what parents can expect.

I would really appreciate if you could help disseminate this information to your parents as soon as possible.

We expect application forms will be available on the website from the end of March. We will write to you again once these are live.

As usual, the sooner transport requirements are known, the better. Parents should apply for transport assistance as soon as their school or college place is confirmed. We aim to arrange transport for the start of the academic year for all applications received by the closing date on 17 May 2026.

We are unable to assess or arrange transport for applications where school or college places are yet to be confirmed, or if applications are incomplete or require further information from parents.

Below is a summary of the transport we provide by age group:

Students aged 16-18 (deadline 17 May 2026)

- All students in this group will need to apply for transport assistance for 26/27
- All Year 12 students who are eligible for transport assistance will be offered a Personal Transport Budget (PTB) as standard. Families can request individual assessment of circumstances as part of their application if they feel a PTB is not suitable.
- Families of returning post 16 students (Year 13 and 14) who have previously been granted Council organised transport (COT) must also apply but will continue to receive COT.
- In both cases there is a charge for transport assistance of £660 per year (or £330 for [low income](#) families). This can be paid by debit or [credit card](#) in one lump sum or up to eight monthly instalments. For those with a PTB the charge is deducted from their monthly payments.

Environment and Transport Department

Leicestershire County Council, County Hall, Glenfield, Leicestershire LE3 8RJ

Telephone: 0116 305 0001 Fax: 0116 305 0006 Minicom: 0116 305 0007

Email: etd@leics.gov.uk

Ann Carruthers, Director

www.leicestershire.gov.uk

- Families of 16-18 year old students must apply every year. This year's deadline is 17 May 2026.

Students aged 19+ (deadline 17 May 2026)

- Families in this group will continue to be able to choose between COT and a PTB.
- There is no charge for students in this group.
- Families of 19+ students must apply every year. This year's deadline is 17 May 2026.

Nursery children (deadline 17 May 2026)

- The council provides discretionary transport for children under age 5 attending specialist nurseries.
- Families must apply every year for transport assistance and can choose between a PTB and COT.
- In both cases there is a charge for this of £660 per year (or £330 for low income families).
- Parents who have COT can pay by debit or credit card in one lump sum or up to eight monthly instalments. For those with a PTB, the charge is deducted from their payments.
- Families of nursery children must apply every year. This year's deadline is 17 May 2026.

School age children: 5-16 year olds (closing date 17 May 2026)

- There is no charge for children in this group and their details will roll forward each year (however individual transport arrangements can still change)
- Families of children in this group only need to apply if:
 - They are applying for transport assistance for the first time
 - They are moving to a different school
- Families who are moving house can provide these details on our contact form
- Families who currently receive a PTB will receive direct communication during April regarding their PTB for the new school year (there is no need to reapply if circumstances have not changed)
- Applications and contact forms received after 17 May 2026 will be processed in date received order but there is no guarantee that transport assistance will be in place for the start of the school year

More information

- We will write to schools again when application forms for the new school year have been launched on our website (end March)

Environment and Transport Department

Leicestershire County Council, County Hall, Glenfield. Leicestershire LE3 8RJ

Telephone: 0116 305 0001 Fax: 0116 305 0008 Minicom: 0116 305 0007

Email: etd@leics.gov.uk

Ann Camuthers, Director

www.leicestershire.gov.uk

- We will write to families of Post 16 students and nursery age children directly when application forms for the new school year are launched on our website (end March)
- I would be grateful if you can tell families that transport does need to be applied for every year for Nursery and Post 16 students

The transport policies for mainstream and SEN, along with a set of Frequently Asked Questions (FAQs), are available on our website at:

[School Transport policy documents and contact details | Leicestershire County Council](#)

Many thanks for your continued assistance in getting these important messages out to families.

Yours sincerely

Rachel Draper
Team Manager, Passenger Transport Services

Environment and Transport Department
Leicestershire County Council, County Hall, Glenfield, Leicestershire LE3 8RJ
Telephone: 0116 305 0001 Fax: 0116 305 0008 Minicom: 0116 305 0007
Email: etd@leics.gov.uk

Ann Carruthers, Director

www.leicestershire.gov.uk



Easter Holiday Crafts



Tuesday 31 March
10.30am – 12.00pm and
2.00pm – 4.00pm

Make an egg-shaped
sun catcher!



at Leicester Cathedral

Tuesday 7 April
10.30am – 12.00pm and
2.00pm – 4.00pm

Using split pins,
make a flapping
chicken!



FREE!

No booking
required – just
drop-in

Thursday 9 April
10.30am – 12.00pm and
2.00pm – 4.00pm

Decorate an eco pot
and plant a sunflower
seed!



Ages 3+
All children must be
accompanied by an
adult

www.leicestercathedral.org





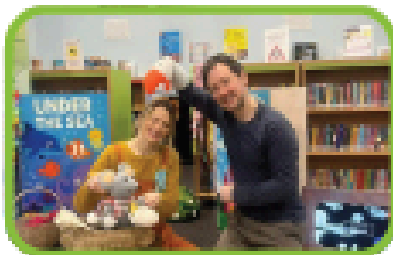
Schools Newsletter

Spring - 2026

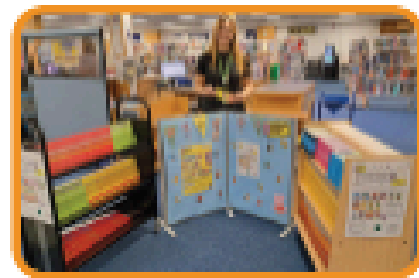
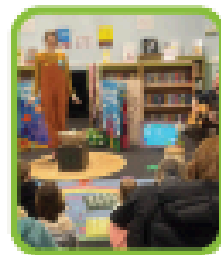


It's been a busy and exciting start to the year at Leicestershire Libraries! From our January challenge packed with fun prompts to boost creativity to colourful rainbow creating sessions with Putty Planet, there has been lots for us to enjoy!

February also brought plenty of excitement as we celebrated National Storytelling Week with free interactive sessions led by Super Sparkle. Families had a great time, commenting on what a 'fun, interactive and engaging' event it was. We also had a fantastic time celebrating World Book Day, sharing stories and sparking a love of reading across our communities.



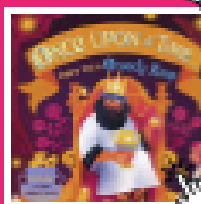
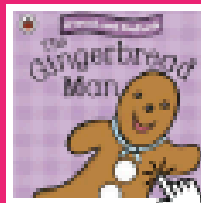
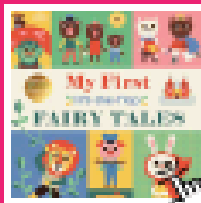
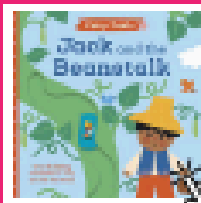
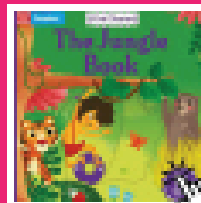
Super Sparkle - Under the Sea Event



World Book Day

Booklist Spotlight

May brings National Share a Story Month, celebrating the joy of reading aloud and how stories bring people together. To mark the theme **Once Upon a Storytime**, we've added a wonderful selection of traditional stories and fairy tales to our library shelves.



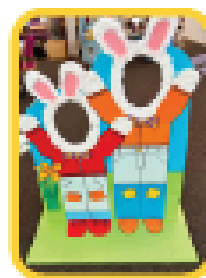
For more book recommendations and to reserve books, visit our [catalogue](#).



Coming Soon

Easter Activities

Keep an eye out for Easter Holiday events and activities taking place in Leicestershire Libraries. You can find out more about what's on at your local library by checking our [What's On?](#) Page and following us on [Facebook](#) and [Instagram](#).



Summer Events



Summer Reading Challenge - 4 July- 12 Sept 2026



READ
to the
BEAT

This July sees the launch of our brand new Summer Reading Challenge, Read to the Beat! Families can look forward to a summer filled with special events and engaging activities across Leicestershire Libraries, exploring how rhythm, music and storytelling spark imagination and creativity.

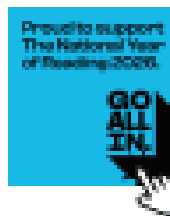


Find your local library [here](#).

Love Your Library

National Year of Reading 2026

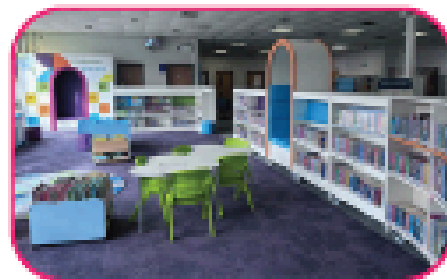
If you're into it, read into it



Did you know that 2026 is the National Year of Reading? Throughout the year, Leicestershire Libraries will be hosting a range of activities and events to encourage reading across our communities. Keep an eye on our website and social media for updates and ways to get involved.

Coalville Library Refurbishment

Coalville Library has reopened after 7 weeks of work behind the scenes. The Children's Library has traded old for bold and now has a fresh, modern feel! The refurbishment was funded by Section 106 Developer contributions. We invite you to come and explore the sensory lights, exciting arches, peep boxes and brand new books and find your favourite new spot in your library.



To find out about upcoming events, visit the ['Whats On'](#) page on our website.



[facebook/coal.library](#)



[@LeicestershireLibraries](#)



libraries@leics.gov.uk



www.leicestershire.gov.uk/libraries

Healthy Together Newsletter

ISSUE 10



Welcome to your latest Healthy Together newsletter

Hello and welcome to the latest edition of your newsletter for parents/carers and school staff from the school nursing team at Healthy Together.

In this update, you can find advice around reducing screen time, information about free online parenting pathways and details of our Lanterns game, encouraging children to write down their worries and watch them float away.

Reducing the amount of screen time for children

To help you explain the importance of looking away from and spending less time on their screens, we have produced 5 easy to understand reasons for you to share with your child.

Riddle me this!

When should you turn off your screen before bed time?

- 1 1 hour before
- 2 1 second before
- 3 1 minute before



[Click here to view our 5 reasons why you need to look up from a screen](#)

Free online parenting pathways to support your journey

TogetherNESS courses cover concerns that parents often face with all children, from before they are born to early adulthood, including physical and mental health, understanding their feelings and how to build better relationships.

Issues that affect children with additional needs including learning disabilities and autism – are also covered.



[Click here to find out more about all of the available courses](#)



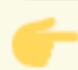
In the Spotlight

Lanterns: Helping to let go of worries

For some children, feelings can be difficult to understand, share and let go of.

To help with this, the [Lanterns game](#) on Health for Kids encourages children to note down their feelings on one of our lanterns and watch as they float away, rather than 'bottling up' how they are feeling.



 [Click here to play our Lanterns game](#)

Contact a school nurse by text message

Leicestershire Partnership NHS Trust runs a dedicated, confidential and secure text messaging service called ChatHealth for parents/carers of children aged 0-11 in Leicestershire and Rutland, which enables you to get professional health advice and support.

Text a Public Health Nurse (School Nurse) on:

07520 615 382



Contact a health professional via the Healthy Together Helpline

You can also call to speak to the Helpline's qualified health and administrative professionals who offer easy to access, safe and free advice, support and signposting.



Call 0300 300 3001


Calls are answered from 9am – 4.30pm on weekdays, excluding bank holidays.

Free local support for managing parental conflict

There is strong evidence that conflict between parents, whether they live together or are separated, can have a significant negative impact on children's mental health, well-being, and long-term life chances

Not all conflict is harmful. Children can cope well with disagreements that are calm, short-lived and resolved. However, when conflict is frequent, intense, or poorly resolved, it can affect how safe children feel, how they manage their emotions, and how they behave at home and in school.

[The East Mids Relationships website](#) offers more information as well as non-judgmental support and guidance for managing parental conflict.

 [Click here to visit the East Mids Relationships website](#)

EastMidsRelationships

TENNIS CAMPS

**THE LEICESTERSHIRE TENNIS CLUB
LE2 3HF**

HOLIDAY CAMPS 2026

For 5 - 17 years - All Equipment Provided
Open to Members & Non-Members
All Standards Welcome 9am - 3.30pm
Morning and Afternoon options available
Early Drop Off Available (extra fee)

To view the dates and to
book please scan the QR
code or visit the link below

**SCAN
ME**



All camps are delivered by LTA
Accredited tennis coaches

BOOK OR CONTACT US:

01952 984 894
enquiries@wedotennis.co.uk
wedotennis.co.uk/the-leicestershire



EASTER HOLIDAYS 2026

The Easter break is nearly upon us and we wanted to send our usual information sheet out to you with some ideas to keep costs down.

Discounted meals

At Frankie and Benny's, you can get a free kids' meal, including a main, two sides, a drink and dessert (per adult main that you buy). The offer runs from Monday 30 March to Friday 10 April. Or you can Download ASK Italian's rewards app and dine in at ASK Italian from 27 March to 19 April to get up to two free kids' meals when you buy one adult main. Your child will be able to choose between the 'happy face pizza' and pasta with their choice of sauce. Click on the pizza to see more offers!



Things to do

Click on the Easter egg below to see a range of activities across North West Leicestershire during the Easter holidays. Events include Easter Crafts, a Family Disco and an Easter Food & Craft Fair.



More things to do

Leicester City Museums and Galleries have a range of activities taking place across Easter. Get involved in Easter Mosaic making at Jewry Wall, a city-wide art trail across Leicester and a K-Pop inspired fun day at the Guildhall. Click on the chick to see all the activities.



Rutland

Looking for an Easter holiday activity with a real wow factor? The Rutland Sea Dragon experience brings one of the UK's most exciting fossil discoveries to life, giving curious kids the chance to step into the world of a real prehistoric sea creature found in Rutland. Click on the dragon for more information!



Fun at home

Looking to keep Easter costs down without sacrificing fun? This guide is packed with free and low-cost ideas, from getting outdoors on nature walks, bike rides and scavenger hunts to visiting child-friendly museums and galleries. It also includes simple at-home activities like crafts, baking and creative play, making it easy to mix days out with relaxed time at home - whatever the British weather brings. Click on the bunny for some ideas!

